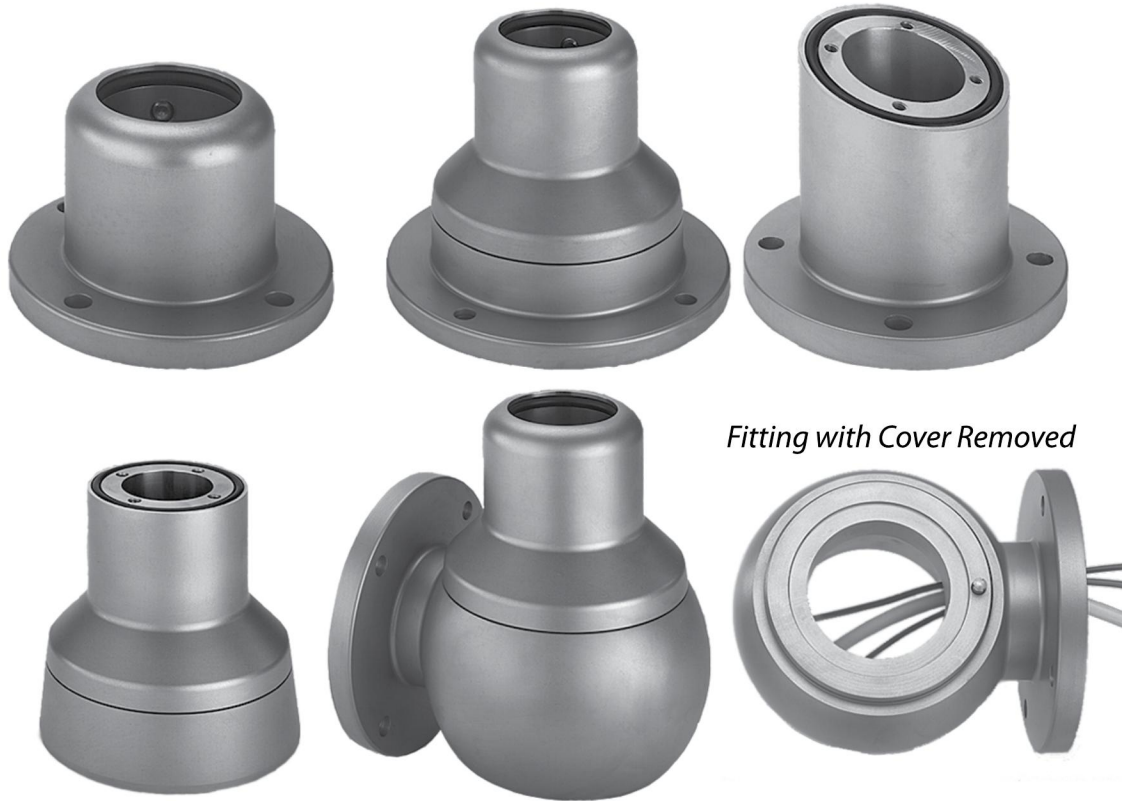


**CS480 STAINLESS STEEL PENDANT ARM SYSTEM**



*Fitting with Cover Removed*

**INDUSTRY STANDARDS**

IEC 60529, IP66

**APPLICATION**

The CS480 Stainless Steel Pendant Arm System performs extremely well in applications that require corrosion resistance and suspension of process and control equipment for easy cleaning and washdown. CS480 is recommended for use with Stainless Steel HMI Enclosures with CS480 pendant cutout. The CS480 system has a high degree of design configuration flexibility. (For possible design combinations, see the System Combinations Drawings.) Used for lighter loads, the CS480 system's load rating at 3.3 ft. (1 m) is 89.6 lb. (40.7 kg). Ratings for other loads are shown in the Load Capacity chart.

**SPECIFICATIONS**

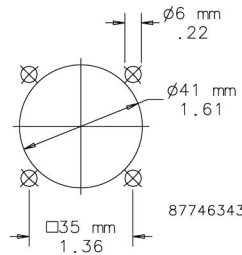
- Tubing clamps into position with setscrews for easy assembly and smooth appearance
- Fixed or swivel mounting, straight or at a 15-degree angle
- 90-degree fittings have a removable cover that allows easy access for wiring
- The coupling hole geometrics for enclosure machining are shown in the Coupling Hole Geometry diagram

**FINISH**

Tubing: Type 304 polished stainless steel  
 Fittings: Type 304 polished stainless steel

*Brushed stainless steel shown.*

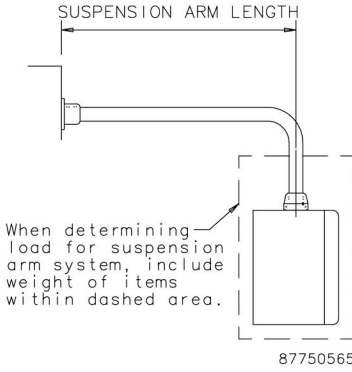
Coupling Hole Geometry for Enclosure Machining



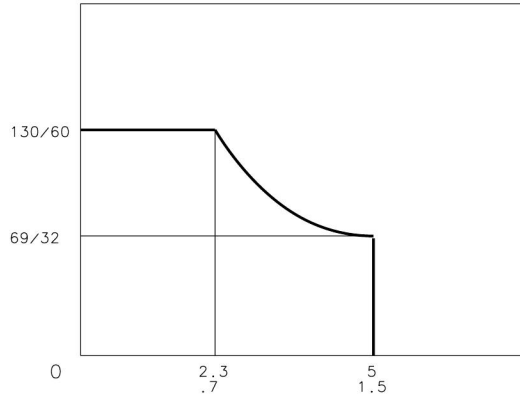
**SYSTEM LOAD CAPACITY**

The load capacity of the CS480 Pendant Arm System is shown in the diagram. Choose the CS600 System for larger loads.

Load Rating



Maximum Recommended Load (lb/kg)

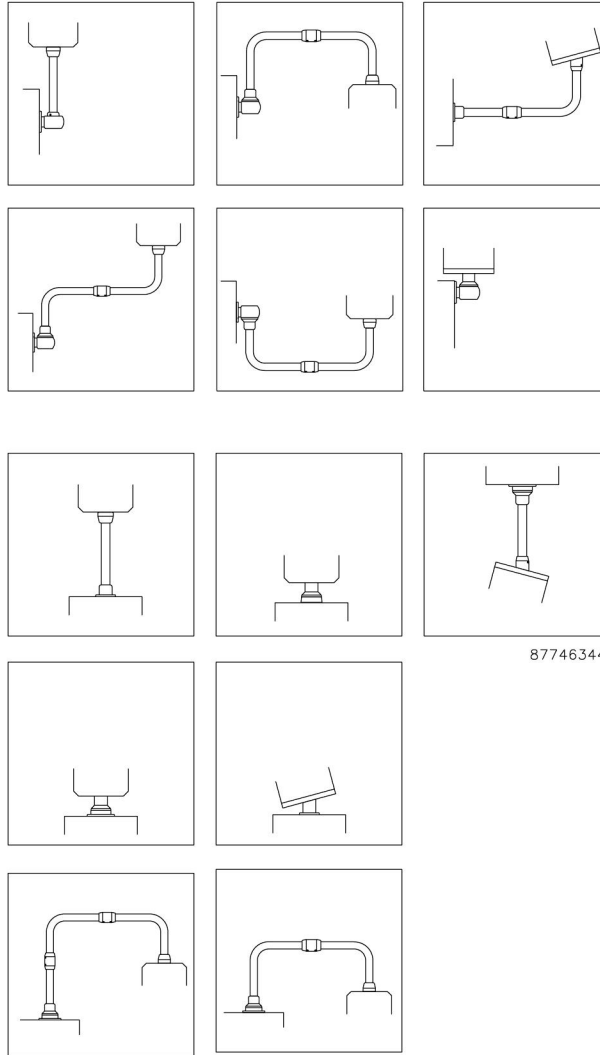


Suspension Arm Length (ft/m)

89001156

**SYSTEM COMBINATIONS**

The wide variety of components permits a high level of flexibility in configuring the system. Some possible combinations are shown here.



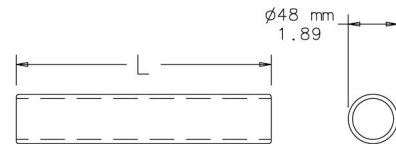
### STRAIGHT TUBING



Straight Tubing has an outer diameter of 48.3 mm (1.90 in.) and is made from 3.6-mm wall thickness Type 304 polished stainless steel.

**BULLETIN: CCR6**

| Catalog Number | L<br>mm/in.   | Product Weight (kg) | Product Weight (lb.) |
|----------------|---------------|---------------------|----------------------|
| CCSS48T25      | 250<br>9.84   | 1.13                | 2.5                  |
| CCSS48T50      | 500<br>19.69  | 2.13                | 4.7                  |
| CCSS48T75      | 750<br>29.53  | 3.18                | 7.0                  |
| CCSS48T100     | 1000<br>39.37 | 4.40                | 9.7                  |
| CCSS48T125     | 1250<br>49.21 | 5.44                | 12.0                 |
| CCSS48T150     | 1500<br>59.06 | 6.67                | 14.7                 |



87799211

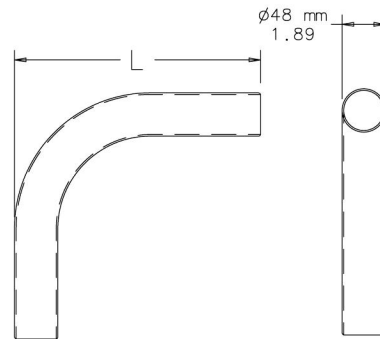
### L-SHAPED TUBING



L-Shaped Tubing has an outer diameter of 48.3 mm (1.90 in.) and is made from 3.6-mm-thick Type 304 polished stainless steel. It is used with coupling sleeves and straight tubing to provide the desired system configuration.

**BULLETIN: CCR6**

| Catalog Number | L<br>mm/in.                | Product Weight (kg) | Product Weight (lb.) |
|----------------|----------------------------|---------------------|----------------------|
| CCSS48TLB25    | 250 x 250<br>9.84 x 9.84   | 2.4                 | 5.3                  |
| CCSS48TLB50    | 500 x 500<br>19.69 x 19.69 | 4.76                | 10.5                 |



87799212

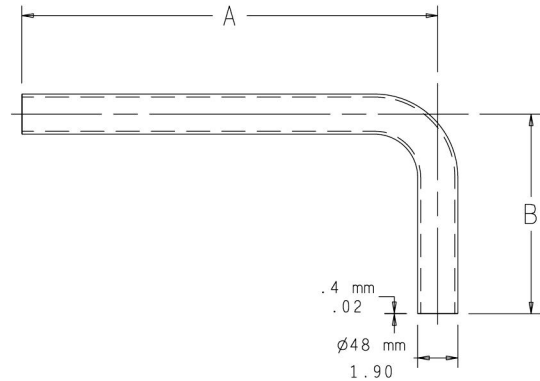
**L-SHAPED STAINLESS STEEL PENDANT TUBES**



L-Shaped Pendant Tubes are made of Type 304 stainless steel with an outer diameter of 48 mm (1.90 in.) and have a smooth finish. For use in conjunction with CS480 stainless steel pendant fittings. Use of these tubes does not compromise the enclosure rating.

**BULLETIN: CCR6**

| Catalog Number | A mm/in.      | B mm/in.     | Product Weight (kg) | Product Weight (lb.) |
|----------------|---------------|--------------|---------------------|----------------------|
| CCSSTL5024     | 500<br>19.69  | 240<br>9.45  | 2.6                 | 5.7                  |
| CCSSTL10050    | 1000<br>39.37 | 500<br>19.69 | 5.4                 | 11.9                 |



87780230

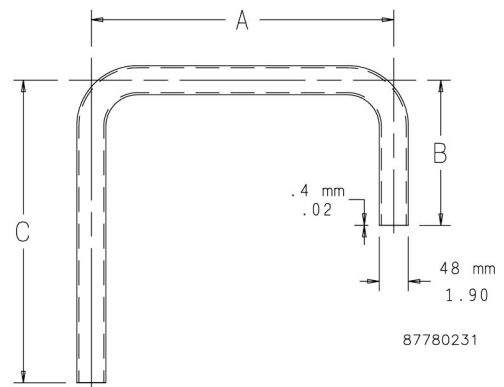
**U-SHAPED STAINLESS STEEL PENDANT TUBES**



U-Shaped Pendant Tubes are made of Type 304 stainless steel with an outer diameter of 48 mm (1.90 in.) and have a smooth finish. For use in conjunction with CS480 stainless steel pendant fittings. Use of these tubes does not compromise the enclosure rating.

**BULLETIN: CCR6**

| Catalog Number | AxBxC in./mm                            | Product Weight (kg) | Product Weight (lb.) |
|----------------|---|---------------------|----------------------|
| CCSSTU502450   | 19.69 x 9.45 x 19.69<br>500 x 240 x 500 | 4.5                 | 9.9                  |
| CCSSTU802480   | 31.50 x 9.45 x 31.50<br>800 x 240 x 800 | 6.7                 | 14.8                 |



87780231

**COUPLING SLEEVE**

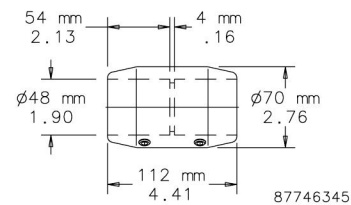


The Shaped Pendant Tubes joins sections of tubing in the CS480 System. Type 304 polished stainless steel finish. Includes gaskets.

**BULLETIN: CCR6**



| Catalog Number | Description                  | Product Weight (kg) | Product Weight (lb.) |
|----------------|------------------------------|---------------------|----------------------|
| CCSS48CS       | CS480 system coupling sleeve | 1.4                 | 3.5                  |



87746345

**STRAIGHT COUPLING**

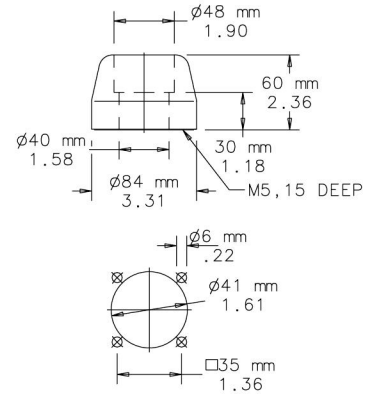


Flange coupling for attaching enclosures. Turns through 340 degrees with rotation limiter. Preset torque. Maintenance-free bearings. Type 304 polished stainless steel finish. Includes gaskets and mounting hardware.

**BULLETIN: CCR6**



| Catalog Number | Description                     | Product Weight (kg) | Product Weight (lb.) |
|----------------|---------------------------------|---------------------|----------------------|
| CCSS48FC       | Straight coupling for enclosure | 1.4                 | 3.5                  |



87799214

NOTE: Recommended mounting hole size shown.

**ANGLE COUPLING**

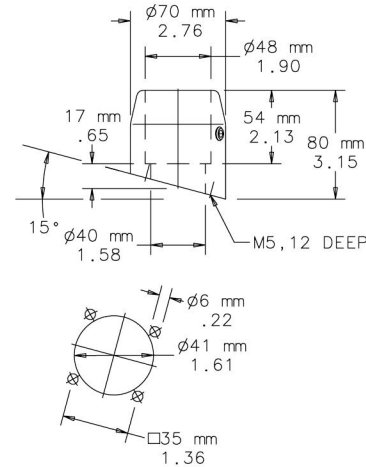


Rigid flange coupling with 15-degree angle of inclination for attaching enclosures. Type 304 polished stainless steel finish. Includes gaskets and mounting hardware.

**BULLETIN: CCR6**



| Catalog Number | Description                   | Product Weight (kg) | Product Weight (lb.) |
|----------------|-------------------------------|---------------------|----------------------|
| CCSS48AC15     | Angle coupling for enclosures | 1.0                 | 2.0                  |



87746346

NOTE: Recommended mounting hole size shown.

**SWIVEL BASE FOR EXTERNAL ATTACHMENT**

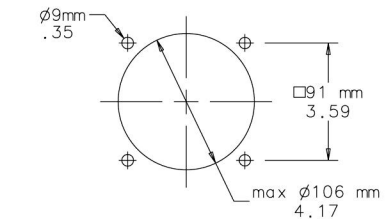
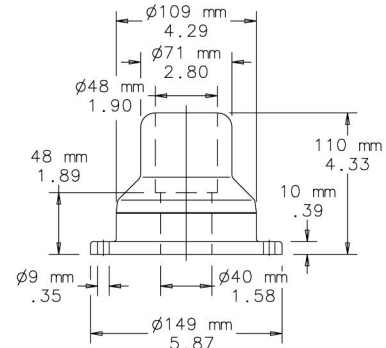


Swivel Base for mounting to machine or floor. Turns through 340 degrees with rotation limiter. Preset torque. Maintenance-free bearings. Type 304 polished stainless steel finish. Includes gaskets. Base-mounting fasteners not provided.

**BULLETIN: CCR6**



| Catalog Number | Description           | Product Weight (kg) | Product Weight (lb.) |
|----------------|-----------------------|---------------------|----------------------|
| CCSS48BBRE     | Swivel base, external | 4.2                 | 9.5                  |



87799217

NOTE: Recommended mounting hole size shown.

**SWIVEL BASE FOR INTERNAL MOUNTING**

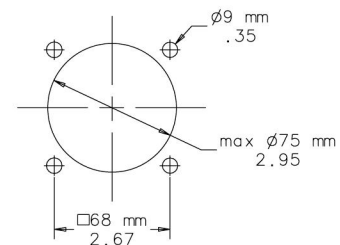
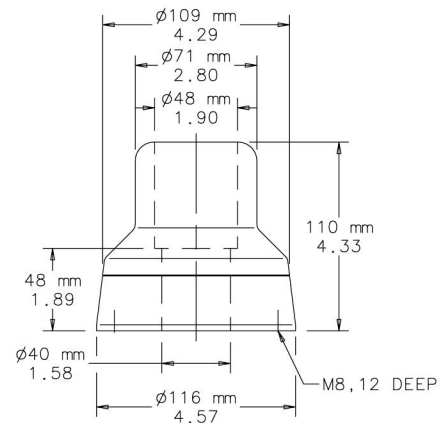


Swivel Base for mounting to machine or floor. Turns through 340 degrees with rotation limiter. Preset torque. Maintenance-free bearings. Type 304 polished stainless steel finish. Includes gaskets. Base-mounting fasteners not provided.

**BULLETIN: CCR6**



| Catalog Number | Description           | Product Weight (kg) | Product Weight (lb.) |
|----------------|-----------------------|---------------------|----------------------|
| CCSS48BBRI     | Swivel base, internal | 4.2                 | 9.5                  |



87746348

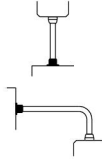
NOTE: Recommended mounting hole size shown.

### BASE BRACKET/WALL FLANGE

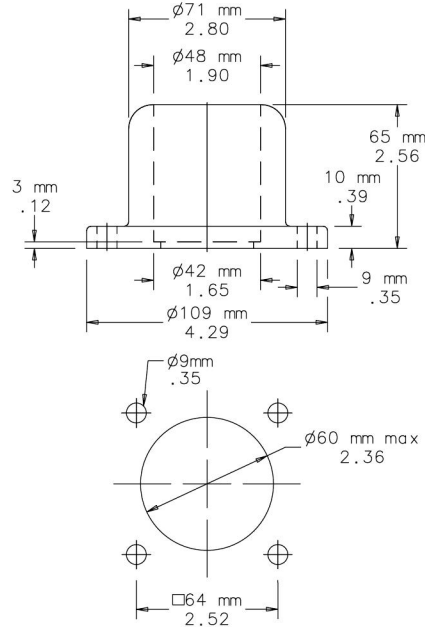


Use as Base Bracket or Wall Flange to mount to vertical or horizontal surfaces. Type 304 polished stainless steel finish. Includes gaskets. Base-mounting fasteners not provided.

**BULLETIN: CCR6**



| Catalog Number | Description              | Product Weight (kg) | Product Weight (lb.) |
|----------------|--------------------------|---------------------|----------------------|
| CCSS48BB       | Base bracket/wall flange | 1.4                 | 3.5                  |



87799220

NOTE: Recommended mounting hole size shown.

### BASE BRACKET ANGLE COUPLING

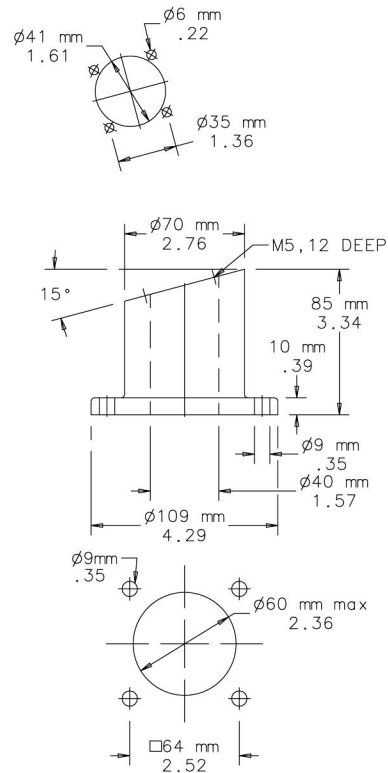


Rigid 15-degree coupling for direct mounting of enclosures to horizontal and vertical surfaces. Type 304 polished stainless steel finish. Includes gaskets and enclosure mounting hardware. Base-mounting fasteners not provided.

**BULLETIN: CCR6**



| Catalog Number | Description                 | Product Weight (kg) | Product Weight (lb.) |
|----------------|-----------------------------|---------------------|----------------------|
| CCSS48ACBB     | Base bracket angle coupling | 1.9                 | 4.5                  |



87746349

NOTE: Recommended mounting hole size shown.



**SWIVEL BASE EXTERNAL BRACKET COUPLING**

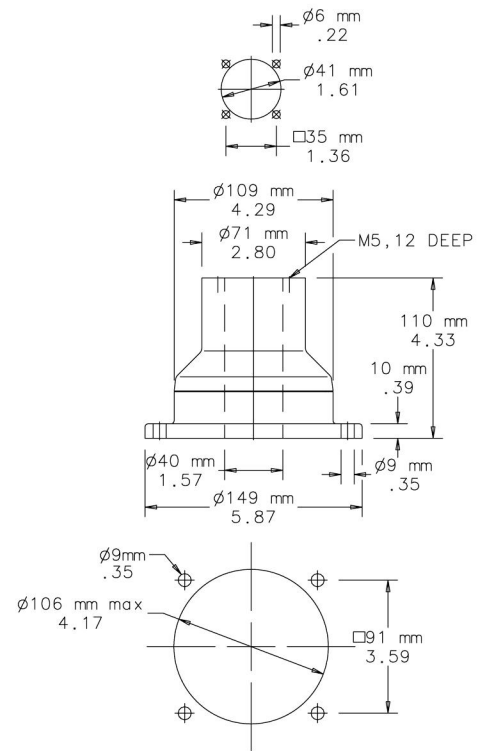


Swivel Base External Bracket Coupling for mounting enclosures directly to a machine or the floor. Turns through 340 degrees with rotation limiter. Preset torque. Maintenance-free bearings. Type 304 polished stainless steel finish. Includes gaskets and enclosure mounting hardware. Base-mounting fasteners not provided.

**BULLETIN: CCR6**



| Catalog Number | Description                           | Product Weight (kg) | Product Weight (lb.) |
|----------------|---------------------------------------|---------------------|----------------------|
| CCSS48BBCRE    | Swivel base external bracket coupling | 4.5                 | 9.92                 |



87799229

NOTE: Recommended mounting hole size shown.

### SWIVEL BASE INTERNAL BRACKET COUPLING

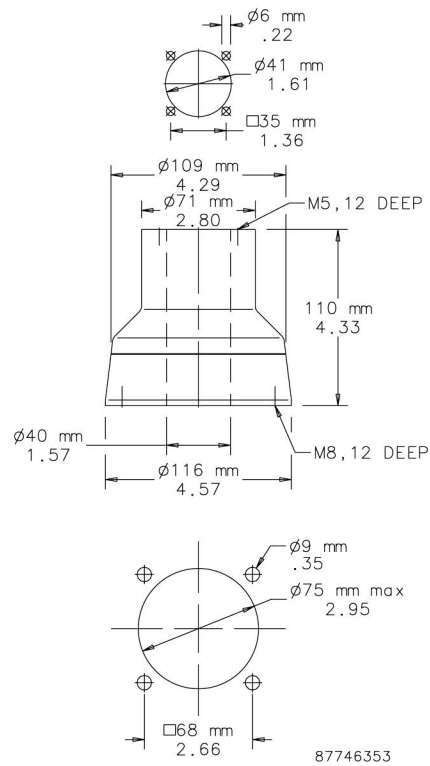


Swivel Base Internal Bracket Coupling for directly mounting enclosures to a machine or the floor. Turns through 340 degrees with rotation limiter. Preset torque. Maintenance-free bearings. Type 304 polished stainless steel finish. Includes gaskets and enclosure mounting hardware. Base-mounting fasteners not provided.

**BULLETIN: CCR6**



| Catalog Number | Description                           | Product Weight (kg) | Product Weight (lb.) |
|----------------|---------------------------------------|---------------------|----------------------|
| CCSS48BBCRI    | Swivel base internal bracket coupling | 4.1                 | 9.03                 |



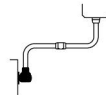
NOTE: Recommended mounting hole size shown.

### WALL JOINT

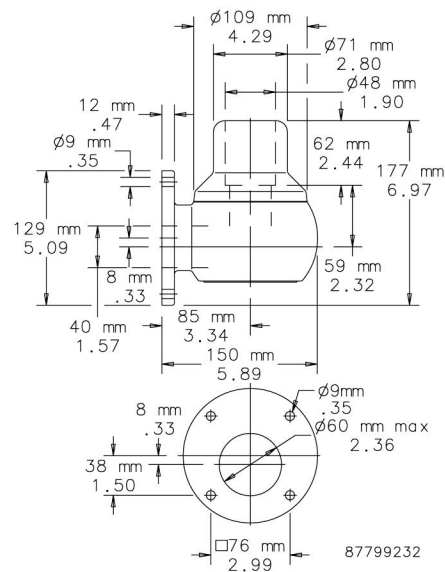


Wall Joint with vertical socket for mounting to vertical surfaces. Cover to facilitate wiring. Turns through 340 degrees with rotation limiter. Preset torque. Maintenance-free bearings. Type 304 polished stainless steel finish. Includes gaskets. Wall-mounting fasteners not provided.

**BULLETIN: CCR6**



| Catalog Number | Description                | Product Weight (kg) | Product Weight (lb.) |
|----------------|----------------------------|---------------------|----------------------|
| CCSS48WJV      | Wall joint, vertical mount | 7.3                 | 16.09                |



NOTE: Recommended mounting hole size shown.

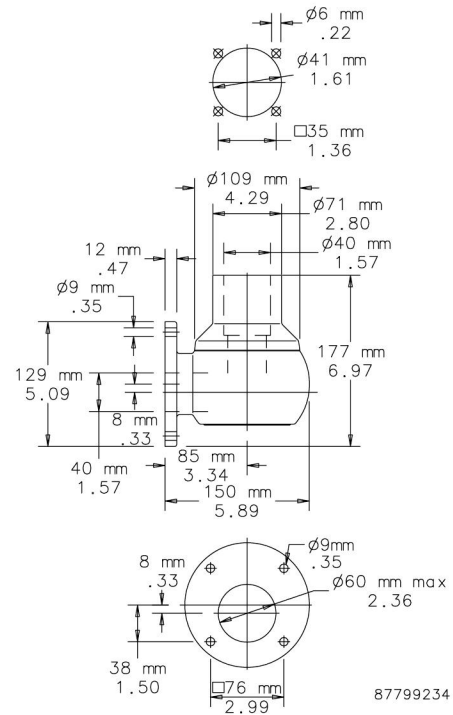


Swivel Wall Coupling for direct mounting of enclosure to vertical machine surfaces. Turns through 340 degrees with rotation limiter. Cover to facilitate wiring. Preset torque. Maintenance-free bearings. Type 304 polished stainless steel finish. Includes gaskets and enclosure mounting hardware. Wall-mounting fasteners not provided.

**BULLETIN: CCR6**



| Catalog Number | Description                   | Product Weight (kg) | Product Weight (lb.) |
|----------------|-------------------------------|---------------------|----------------------|
| CCSS48WJC      | Wall coupling, vertical mount | 7.3                 | 16.09                |



NOTE: Recommended mounting hole size shown.

**WALL BRACKET**

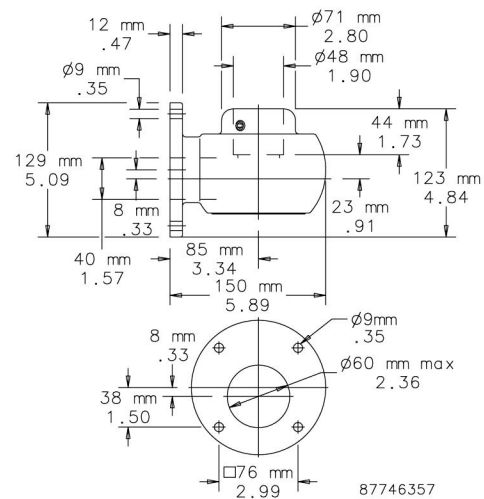


Wall Bracket with vertical socket for attachment to vertical surfaces. Cover to facilitate wiring. Type 304 polished stainless steel finish. Includes gaskets. Wall-mounting fasteners not included.

**BULLETIN: CCR6**



| Catalog Number | Description  | Product Weight (kg) | Product Weight (lb.) |
|----------------|--------------|---------------------|----------------------|
| CCSS48WJRV     | Wall bracket | 7.7                 | 16.25                |



NOTE: Recommended mounting hole size shown.

## Notes